

*This is just a small selection of our camps in Linyanti and Selinda. Please **click** on any to view.*

1



DUMA TAU

2



KINGS POOL CAMP

3



SAVUTI CAMP

4



SELINDA CAMP

5



ZIBALIANJA CAMP

*Press 'esc' to leave full screen mode*

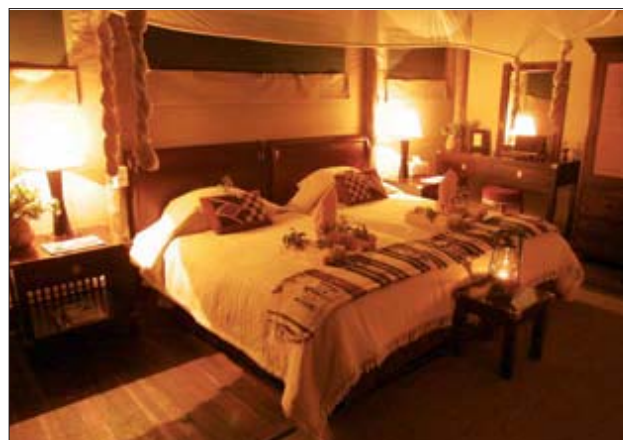


### Classic Wilderness Camp

DumaTau is built under a shady grove of Mangosteen trees and overlooks an enormous hippo-filled lagoon. It is located close to the source of the Savuti Channel in the Linyanti Reserve, which makes game drives along the Savuti one of the highlights of a stay here. Accommodation is in ten luxurious, tented rooms under thatch, with en-suite facilities including both indoor and outdoor showers. The main areas include a dining room, pub, lounge, plunge pool and a special guest toilet with a fantastic view. The area is well known for its elephant concentrations as they congregate along the waterways and lagoons during the dry winter months.



General wildlife viewing is great all year round with impala, wildebeest, red lechwe, zebra, giraffe, sable, roan, waterbuck, buffalo, baboon, monkey, warthog, lion, leopard, cheetah, wild dog and hyaena. Also to be found are bushbaby, springhare, aardwolf, serval and genet. Activities allow guests to view game on land, while on foot, and on the water (levels permitting). There are day and night game drives, and short nature walks along the Linyanti River and Savuti Channel, while the camp's boat will take visitors to view hippo. There are also a number of hides where guests can view and photograph animals close-up



### Premier Wilderness Camp

This luxurious camp overlooks the Kings Pool Lagoon and Linyanti River. Accommodation is in nine well-appointed rooms of canvas and thatch, each with a large bedroom area, lounge, private plunge pool and sala. The en-suite bathrooms are tiled, with double showers, double hand basins, flush toilet and an outdoor shower. Raised walkways allow animals to wander freely around the camp. The lounge, dining room and pub are under thatch and there is a swimming pool and an open-air 'kgotla' for dining under the stars. The area is famed for its large herds of elephant that reach enormous densities in the dry winter months. Other game is abundant, such as impala,



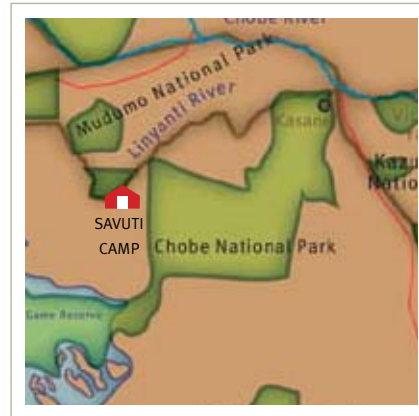
lechwe, kudu, zebra, giraffe, sitatunga, sable, roan, waterbuck, buffalo and bushbuck, and their predators: lion, leopard, cheetah, wild dog and hyaena. Activities include day and night game drives and walks, while double-decker boat cruises along the Linyanti River offer spectacular viewing. Highlights of this camp include the amazing sounds of the wildlife all around, as well as two hides, where guests can spend a siesta watching game come down to drink. The other is an underground hide, with the water at eye-level – seeing elephant feet and trunks almost within touching distance while safely inside is an experience that transcends that of an ordinary safari.



*Press 'esc' to leave full screen mode*

### Classic Wilderness Camp

Savuti Camp is located in an isolated part of the reserve, about 17 kilometres 'downstream' from the source of the Savuti on the Channel. Since it stopped flowing in 1980, what was a hippo-filled river is now grassland, and a legendary predators' enclave. The waterhole in front of the camp is the only source of water over a large area in winter and therefore offers marvellous wildlife viewing. This intimate camp's accommodation is in seven large walk-in tents that are raised off the ground. The en-suite facilities include a bathroom and shower, hand basin and flush toilet and two of the tents have wonderful open-fronted bathrooms facing onto the

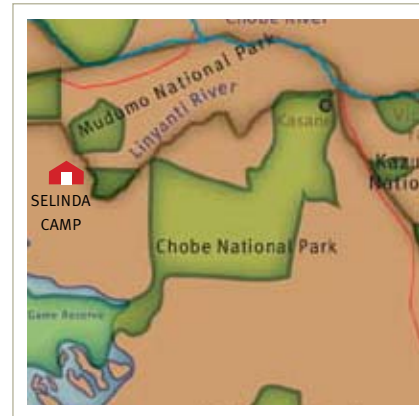


Savuti Channel. The camp has a thatched dining area, pub and plunge pool, all on raised wooden decks, providing a wonderful view of the waterhole. Activities on offer are day and night game drives, nature walks with a guide, and several hides for safe, up-close animal viewing. Savuti Camp's "woodpile hide" is famous for the finest in elephant viewing where one literally feels what it is like to be with the herd. Game concentrations are high, particularly in winter, and apart from plains game there are roan, sable, giraffe, lion, leopard, cheetah and wild dog.



## Classic Wilderness Camp

Selinda Camp is situated in the Selinda, a 135 000-ha reserve that straddles the ephemeral Selinda Spillway. The camp overlooks this waterway which links the Okavango Delta with the game-rich floodplains of the Linyanti Swamps. The camp's nine Meru-style tents are under thatch with unique en-suite facilities fashioned into the natural vegetation. Open views of the spillway and floodplains, a cool veranda, hot and cold running water, flush toilet and a shower under the open African sky are all standard. The main area is a thatched double-tiered building incorporating dining, lounge and bar facilities.



Guests can also enjoy a plunge pool, traditional campfire and small curio shop. Daily activities revolve around morning, afternoon and night game drives with experienced professional guides in custom built 4x4 Land Cruisers. The Selinda is characterised by its game-rich floodplains which are host to a variety of antelope, zebra, cheetah, wild dog, lion and plenty of elephant. The Selinda Walking Trail, a superb two-day walk between Tswene and Mokoba Trails Camps in the Linyanti Concession, is a wonderful addition to a stay at either Selinda or Zibalianja camps.

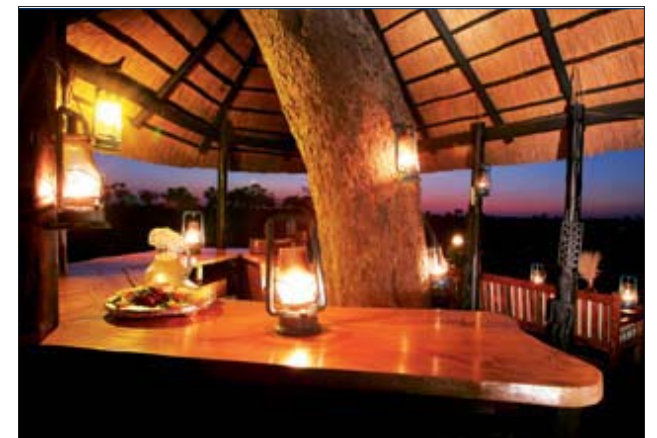


## Classic Wilderness Camp

Also situated in the Selinda concession, Zibalianja Camp is located near the Zibalianja Lagoon – source of the Savuti Channel. Built around a palm island in a sea of floodplain savannah, Zibalianja's four Meru-style tents are all en-suite and built on wooden decks with wide vistas of the surrounding floodplains. With a maximum of six guests, the emphasis is on intimate hospitality in the tradition of a by-gone safari era. The thatch bar and viewing deck overlook a small, but active waterhole, whilst meals are taken in the warmth



Activities include game drives, in the early morning, afternoon and at night, allowing sightings of both day and night-time wildlife. Short nature walks with an experienced guide can be taken as well. In addition, guests may extend their stay to experience the Selinda Walking Trail. Siesta time is best spent in the sunken hide at the edge of the waterhole, watching the wide variety of plains game and predators that arrive to drink. Wildlife includes elephant, zebra, giraffe, cheetah, wild dog, lion and an amazing amount of birdlife of the well appointed “mess tent.”



Press 'esc' to leave full screen mode