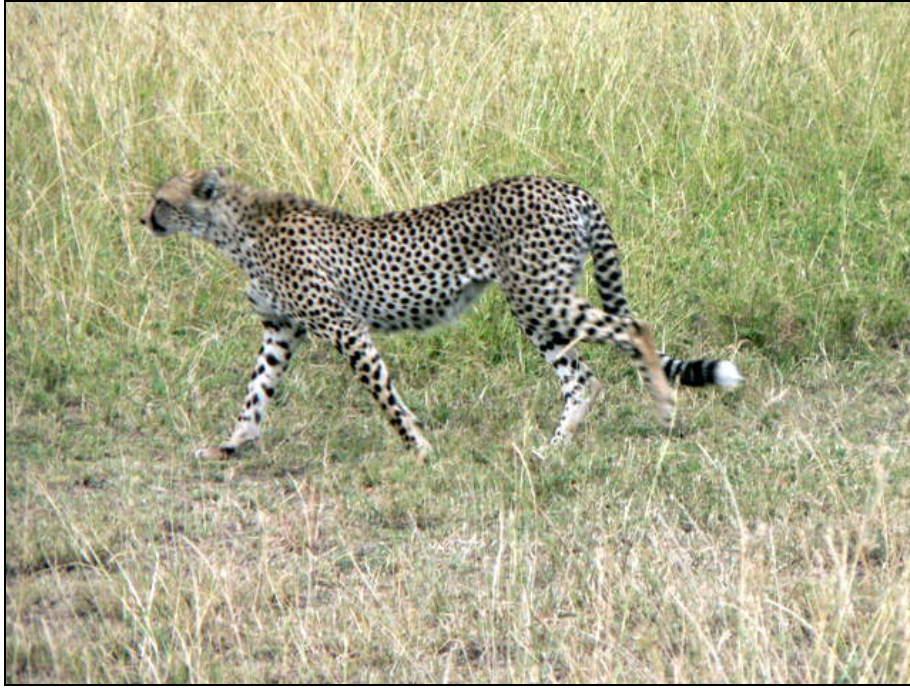




Journeys of a lifetime

“MARA AND BEACH” FLYING SAFARI WITH THE SOUTH COAST



Highlights:

This Safari visits the Maasai Mara undoubtedly one of Africa's finest wildlife havens and the feature of many wildlife documentaries.

The Maasai Mara defies description: undoubtedly the spectacular migration of Wildebeest and Zebra searching for lush grazing following the rains, stalked by the omnipresent predators, is one of the world's greatest wildlife marvels. But the migration is by no means the only feature – this fascinating eco-system is home to enormous herds of plains game, the Big Cats and Elephant as well as colourful birds, small game, riverine wildlife and stunning scenery.

You will be staying at the authentic Kicheche Valley Camp, a high quality safari camp located in the private Naibosho Conservancy.

The second part of your safari and beach holiday takes you to Galu Beach on the South Coast. You will be staying in an excellent little hotel on Galu beach, a picture perfect strip of palm fringed, blindingly white sand and warm blue sea where you can enjoy a restful and romantic few days after your exciting safari.

Day 1: Between 5 th January and 31 st March 2012

You will be met off your inbound flight at Jomo Kenyatta International Airport and transferred to the domestic airport for your flight to the Maasai Mara with Safari Link at 1000 hrs. You will be met on arrival and transferred to the Kicheche Valley Camp which will be your base for the next four nights on a fully inclusive basis including all meals, locally branded beers, soft

drinks, spirits and house wines, laundry, parks fees and all scheduled game activities.

KICHECHE VALLEY CAMP

Kicheche Valley Camp is a new camp within the Naboisho Conservancy, the camp is set on the Eastern side in a beautiful secluded valley dotted with Acacia trees. The tents lie amongst the trees and rocky outcrops and enjoy wonderful views of the game filled plains to the south. The location is close to both the Enniskeria river region, with it's stunning granite outcrops and permanent pools popular with the resident wildlife, and the vast plains to the north hosting large numbers of plains game and containing a vital elephant corridor to the North. The valleys to the west provide a scenic backdrop whilst game driving and are ideal for game walks

The camp is an intimate luxury bush camp, completely unfenced, accommodating 12 guests, all under canvas. Each tent is spacious, fully insect-proof and equipped with large beds, bedside tables, luggage racks, lounge chair, desk and rugs. Bathrooms are en-suite and are equipped with a dresser, shower, flushing toilet and running water. Triple bed configuration is available on request.

<http://www.kicheche.com/camps-naboisho.shtm>

Day 5:

Morning game drive and check out of your room at 1000 hrs. After lunch transfer to the airstrip for your flight to Ukunda at 1400 hrs with Mombasa Air Safaris. You will be met off your flight and transferred to Galu Beach and your hotel for the next five nights, Pinewood Village, where you will be staying in a suite with private chef arrangement on a half board basis.

PINEWOOD VILLAGE

Welcome to Galu Beach located 40 km south of Mombasa.

Here you can enjoy the simple pleasures of an unspoilt white sandy beach, warm blue waters of the Indian Ocean and a tropical forest which is home to an astonishing array of resident and migratory birds. It is also home to the plentiful Sykes monkey and the endangered Angolan Colobus monkey.

Galu Beach is adjacent to the famous but crowded Diani Beach, the hub of tourist activity. Diani is 7 km north of Pinewood and offers all the facilities and amenities of an urban centre like shopping, entertainment, casinos and medical care.

Pinewood Village is ideally situated for sea excursions. Nearby Wasini, Kisite, Chale, Funzi and Shimoni are all havens for snorkelling, scuba diving, deep sea fishing and sight-seeing. Pinewood Village is a small boutique Beach Resort offering an experience that is truly special. It is ideally situated on the quiet and deserted shores of Galu Beach, one of the finest beaches in Kenya, South of Mombasa. Pinewood Village is small, private, and very personal. The hotel is set amidst tropical flora and palms and offers an ambiance that is supremely tranquil.

The accommodation consists of tastefully furnished rooms and private suites. Each suite is allocated an experienced Chef who is capable of preparing and producing the highest international culinary standard to your individual choice.

In-house facilities include attractive swimming pool, swim-up pool bar, Beach Deck, "Tamu" Snack Grill, "Peponi" Beach bar and Restaurant, "Jahazi" Bar and Bistro, "Bahari" Restaurant, Aqualand Watersport Centre, tennis court, squash court, "Zawadi" Boutique and Beauty Salon.

View at <http://www.pinewood-village.com/>

Day 10:

You will be collected from your hotel and transferred by road to the Moi International Airport for your outbound flight to Nairobi and onward connections

TOTAL PRICE PER PERSON ON A NAIROBI TO MOMBASA BASIS US\$3051 (£2034)

What's included:

All transfers to and from International and domestic airports
Full board accommodation at all safari properties
Half board accommodation at Pinewood Village in a suite.
All beverages including locally branded alcoholic and soft drinks at Kicheche Valley
Laundry at all safari properties
All scheduled game activities
Park Fees
Internal Flights Wilson/Maasai Mara Maasai Mara/Ukunda

What's not included:

Visa fees (Currently £30)
Tips and gratuities for guides and camp staff
Purchases of a personal nature
Lunch and Drinks at Pinewood Village
Motorised water activities such as Scuba and fishing at Pinewood Village

Wildlife Sightings

Africa's wildlife is free ranging and moves according to seasonal availability of food and water therefore no sighting is guaranteed. The following species can be found in the areas visited on this safari and guests can expect to see many of them.

Elephant, Giraffe, Black Rhino, White Rhino, Lion, Leopard, Cheetah, Wild Dog, Spotted Hyena, Jackal, African Wildcat, Serval, Caracal, Civet, baboon, Vervet Monkey, Bush Baby, Genet, Mongoose, Porcupine, Aardvark, Pangolin, Wart Hog, Bush Pig, Cape Buffalo, Zebra, Wildebeest, Impala, Bushbuck, Eland, Duiker, Kongoni, Topi, Waterbuck, Greater and Lesser Kudu, Grants Gazelle, Thompsons Gazelle, Hippopotamus, Crocodile, Monitor Lizard, Ostrich, Bat Eared Fox. Also many bird and reptile species.

When to go:

This Safari can be enjoyed at any time of year but this itinerary is a special offer available from January to March 2012. At this time of year the weather both at the coast and in the Maasai

Mara should be warm, dry and sunny. Game viewing in the Maasai Mara is excellent throughout the year.

Who should go:

Perfect for a first safari or first time visitors to Kenya and also for clients looking for a high quality intensive safari with first class accommodation at a competitive price. This safari is a wonderful trip for that once in a lifetime experience or special occasion. Your beach stay is in a smaller boutique style hotel which offers a good range of activities for the more active guest or a great swimming pool and beach for those seeking rest and relaxation.

We Say:

“Mara and Beach” is a top quality “big five” safari on an all inclusive basis, few extra costs and an excellent chance of seeing all of Africa’s Big Five. This safari is a superb mix of adventure and relaxation with a good variety of activities on offer and excellent guiding and hosting. Although this is a new camp in a new conservancy we have been receiving excellent feedback from returning guests both about the game viewing and the quality of the camp. Why not take a champagne breakfast hot air balloon ride (Extra at cost) over the Maasai Mara to make your safari even more special.

SAFARI CLUB PROMISE:

Our consultants are dedicated to providing you, our clients, with the safari holiday of your dreams, we will always endeavour to offer you the best value safari and beach holiday in line with the time available and budget guidelines you have supplied.

The camps, lodges and hotels included in our trips are regularly vetted by our consultants to ensure the highest standards are maintained and that every safari and associated beach stay is a unique and authentic African experience.

Safari Club will never compromise the quality of our safaris by offering a knowingly inferior product in the interests of price.

“Our Air Travel Organisers Licence, (ATOL 9991), is issued by the Civil Aviation Authority in the United Kingdom and provides you with the guarantee that your money is safe with us. We are fully bonded to give you the financial security you are entitled to.”



www.safari-club.co.uk

Safari Club Ltd • The Old Post Office • The Green • Wingrave • Buckinghamshire • HP22 4PD
Tel: +44 845 0545 889 • Fax: +44 560 0752 031 • Web: www.safari-club.co.uk

Safari Club Ltd. Registered in England. Company Registration No. 6393732