

**“RIFT VALLEY EXPLORERS” TOUR WITH LAKE NAKURU AND THE MAASAI MARA**



**Highlights:**

This Safari visits the Rift Valley Lakes of Lake Nakuru and Naivasha, a beautiful area famous for its Flamingos. Your stay includes a visit to Lake Nakuru National Park where you will hopefully witness the spectacle of thousands of Flamingo,s feeding in the shallows, Lake Nakuru is also a sanctuary for highly endangered black and white rhinos.

You will then fly to the Maasai Mara an area that defies description: undoubtedly the spectacular migration of Wildebeest and Zebra searching for lush grazing following the rains, stalked by the omnipresent predators, is one of the world’s greatest wildlife marvels. But the migration is by no means the only feature – this fascinating eco–system is home to enormous herds of plains game, the Big Cats and Elephant as well as colourful birds, small game, riverine wildlife and stunning scenery.

You will be staying at the world famous Little Governors Camp located beside a waterhole close to the Mara River in a particularly rich area of the Mara eco system.

**Day 1**

You will be met off your flight at Jomo Kenyatta International Airport and driven in a safari

vehicle to Lake Naivasha. You will be based at Loldia House on a fully inclusive basis including all meals, locally branded beers, soft drinks, spirits and house wines, laundry, Lake Nakuru parks fees and all scheduled game activities. Activities here include boat trips on the lake and visits if you wish to Hells Gate National Park and Crescent Island for which transport included but entry fees are payable locally.



### **LOLDIA HOUSE**

Loldia Farm was established by a settler who came to Kenya by ox-wagon after the Boer War and is still owned by the same family today. He was a renowned horseman who chose this beautiful corner of Kenya to enjoy all that was best in the early Kenyan Lifestyle. Nestling under the acacia and wild fig trees on the green, western shores of Lake Naivasha, the present Loldia House was constructed by Italian prisoners of war from stone quarried on the farm. Built around a courtyard, its main archway frames a stunning view of the dormant volcano Mount Longonot.

The house is set in lawns, which are grazed at night by hippos from the lake. Today's guest can savour the taste of this early lifestyle in Loldia's uniquely peaceful setting. The farm is ideally situated to visit the flamingo lakes of Nakuru, Elementetia and Bogoria, one of the great spectacles of Africa. Lake Nakuru also offers excellent viewing of the White Rhino and the more elusive Black Rhino amongst an abundance of other bird and wildlife and is one of the best places in Kenya to see leopard.

On the farm's 6.500 acres, guests may walk or ride through herds of dairy and beef cattle and a flock of farmed ostriches, interspersed with impala, waterbuck and other plains game. Boat trips are also arranged on Lake Naivasha for fishing and bird watching, and visits can be made to Hell's Gate with its spectacular canyon, hot springs and abundant wildlife. Activities can be tailor-made to suit each guest.

Loldia offers the highest standards of cuisine and personalised service.

View at <http://www.governorscamp.com/loldia%20house.htm>

### **Day 3**

Today you will transfer to the airstrip for your flight to the Maasai Mara. You will be met on arrival and transferred to Little Governors Camp. which will be your base for the next four nights on a full board basis including all meals, bottled water, laundry, parks fees and all scheduled game activities including up to three activities per day.

### **LITTLE GOVERNORS CAMP**

Little Governors' Camp is situated at the heart of one of the most game rich areas of the Maasai Mara National Reserve. It is set on the Musiara Marshlands, which are watered by the Mara River, the area having traditionally been reserved for Kenya's colonial Governors. The area surrounding Little Governors' Camp is home to substantial herds of elephants, hippos and buffalos whilst also providing home for the herds of migrating zebra and wildebeest. The nearby plains are the classical image of savannah Africa, dotted with acacia trees and fringed by the inspiring Siria escarpment

Little Governors' Camp consists of 17 tents spread around the shores of the Musiara waterhole, which acts as the focal point for the site. From the shade of your tent veranda you can relax and enjoy the views as giraffe, elephant, zebra and warthog pass by. During the evening hippos and elephants graze in the grounds of the camp making the Maasai askari (warden) guiding you back to the tent especially comforting. The gas-lit tents are particularly comfortable and spacious with the shower room being especially well-equipped. Candlelit evening meals are of a high standard from a buffet bar and generally are eaten alfresco with views of the nearby Siara escarpment.

Little Governors' is one of the few camps within the Masai Mara that provide three game drives every day and being a stones throw away from the Mara River ensures that the action during the migration season (July–October) is a short game drive away. The start of your game drive is an adventure in itself, walking beneath the canopy of indigenous forest trees, two fairly steep sets of steps and a river crossing of your own, by hand-pulled ferry. Not only are grazing animals particularly common in this area but also big cats which are very often found stalking the local plains game. The area Rhino Ridge is also good for spotting one of the Maasai Mara's 20 or so endangered black rhinos.

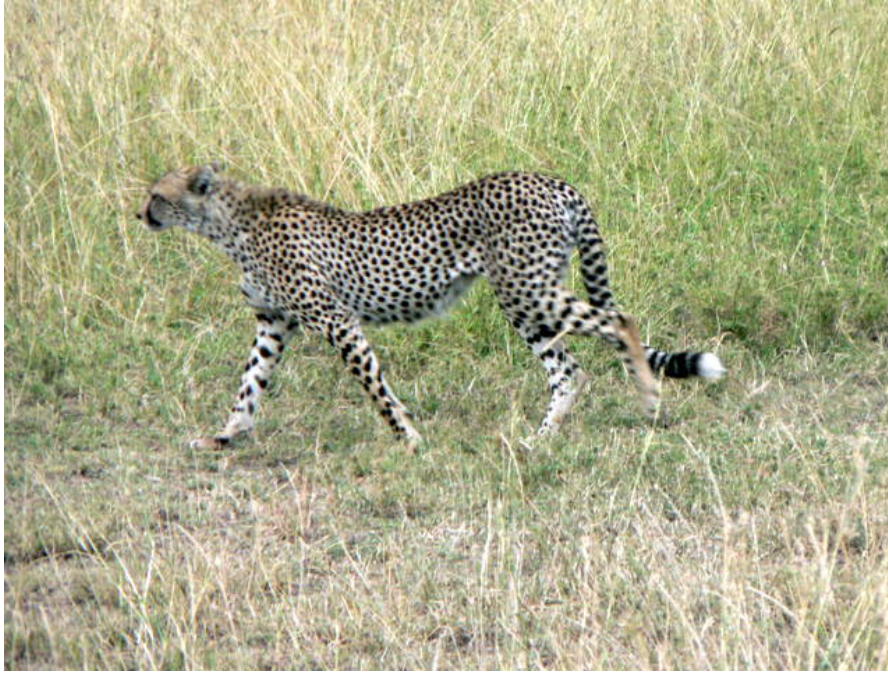
Sunrise balloon safaris also begin from the camp offering a spectacular way of witnessing the diversity present within the Mara.

Governors camps are famous not only as the place where BBC,s "Big Cat Diary" is filmed but also where the popular film "Out of Africa" was made.

View at <http://www.governorscamp.com/>

### **Day 7**

Morning game drive then after lunch you will transfer back to the airstrip for your flight to Nairobi at 1600 hrs with Safari Link. You will be met off the flight and transferred to a local restaurant for diiner (payable locally) later you will be picked up and transferred to the International Airport in time for your return flight.



**TOTAL PRICE PER PERSON SHARING ON A NAIROBI TO NAIROBI BASIS**

<b>Jan to March &amp; 1 st to 15 th July and 1 st Nov to 14 th Dec 2011</b>	<b>US\$3771 (£2514)</b>
<b>1 st April to 39 th June 2011</b>	<b>US\$2960 (£1975)</b>
<b>16 th July to 31 st Oct and 15 th to 31 st Dec 2011</b>	<b>US\$4114 (£2742)</b>

**What's included:**

All transfers to and from Jomo Kenyatta International Airport  
Internal Flights  
Full board accommodation at all properties  
All beverages including locally branded alcoholic and soft drinks at Loldia House  
Laundry  
All scheduled game activities

**What's not included:**

Visa fees  
Tips and gratuities for guides and camp staff  
Purchases of a personal nature  
Bar Drinks at Little Governors Camp  
International flights

**Wildlife Sightings**

Africa's wildlife is free ranging and moves according to seasonal availability of food and water therefore no sighting is guaranteed. The following species can be found in the areas visited on this safari and guests can expect to see many of them.

Elephant, Giraffe, Black Rhino, White Rhino, Lion, Leopard, Cheetah, Wild Dog, Beisa Oryx, Spotted Hyena, Jackal, African Wildcat, Serval, Caracal, Civet, baboon, Vervet Monkey, Bush Baby, Genet, Mongoose, Porcupine, Aardvark, Pangolin, Wart Hog, Bush Pig, Cape Buffalo, Zebra, Wildebeest, Impala, Gerunek Bushbuck, Eland, Duiker, Kingoni, Topi, Waterbuck, Greater and Lesser Kudu, Grants Gazelle, Thompsons Gazelle, Hippopotamus, Crocodile, Monitor Lizard, Ostrich, Bat Eared Fox. Also many bird and reptile species.

### **When to go:**

This Safari can be enjoyed at any time of year but it can be wet from Mid April to Early June although this should not affect your game viewing greatly. The game viewing is good all year round and is spectacular in the Maasai Mara during the annual wildebeest migration between late July and late October. Guests are advised that it gets cold at night from June to August but the days are generally warm and sunny.

### **Who should go:**

Perfect for a first safari or first time visitors to Kenya with excellent big five game viewing. This safari provides a good variety of activities and concentrated big game viewing for those with limited time to spend in Kenya.

### **We Say:**

The “Rift Valley Explorers” safari is a top quality “big five” safari with an excellent chance of seeing big cats and with possibly the best chance of Cheetah sightings anywhere. This safari is good as a stand alone short safari or as part of a longer holiday with a beach stay on Kenya’s fabulous coast. Why not enhance your safari with a hot air balloon flight (Extra cost) over the game rich plains of the Maasai Mara

### **SAFARI CLUB PROMISE:**

Our consultants are dedicated to providing you, our clients, with the safari holiday of your dreams, we will always endeavour to offer you the best value safari and beach holiday in line with the time available and budget guidelines you have supplied.

The camps, lodges and hotels included in our trips are regularly vetted by our consultants to ensure the highest standards are maintained and that every safari and associated beach stay is a unique and authentic African experience.

Safari Club will never compromise the quality of our safaris by offering a knowingly inferior product in the interests of price.

**“Our Air Travel Organisers Licence, (ATOL 9991), is issued by the Civil Aviation Authority in the United Kingdom and provides you with the guarantee that your money is safe with us. We are fully bonded to give you the financial security you are entitled to.”**



[www.safari-club.co.uk](http://www.safari-club.co.uk)

Safari Club Ltd • The Old Post Office • The Green • Wingrave • Buckinghamshire • HP22 4PD

Tel: +44 845 0545 889 • Fax: +44 560 0752 031 • Web: [www.safari-club.co.uk](http://www.safari-club.co.uk)

Safari Club Ltd. Registered in England. Company Registration No. 6393732