



**Botswana Delta, Rivers and Pans 8 nights**  
**Travel Dates: 1/12/2011 to 31/3/2012 excluding Christmas**  
**£2540 (US\$3938)pp**

Nxai, Kwara, Lebala & Stanley's Maun to Livingstone

**Itinerary:**

- Arrive into Maun and transferred by light aircraft bound for Nxai Pan
- 2 nights Nxai Pan
- Light aircraft to Kwara
- 2 nights Kwara
- Light aircraft transfer to Lebala
- 2 nights Lebala
- Light aircraft transfer to Kasane airport
- Road transfer to Stanley's Safari Lodge in Livingstone
- 2 nights Stanley's Lodge
- Transfer to Livingstone Airport – tour ends

**Includes:**

- Full board accommodation
- Transfers
- Internal flights
- Alcoholic and non alcoholic drinks
- Game activities
- Certain activities at Victoria Falls

On arrival at Maun Airport ex your flight from Johannesburg, you will be met by a representative who will introduce you to your pilot and show you onto your light aircraft for a departure out of Maun.

**Nxai Pan for 2 nights**

Nxai Pan National Park lies just north of the Maun-Nata road and adjoins Makgadikgadi Pans National Park on its northern border. The camp is situated in the tree line with 8 purpose built desert tents. All of the 8 tents have private viewing decks, inside and outside showers and fans. The main area has a swimming pool, curio shop and library.



Nxai pan is well known for its huge springbok population and once the rains have started, gemsbok, elephant and zebras migrate to the region. At this time zebra's come in their thousands to drop their young at Nxai Pan. Extraordinarily large herds of giraffe's can be seen with up to 30 in a group. These large herds of zebras, springbok, and wildebeest attract many predators – lion, cheetah, jackal and both spotted and the elusive brown hyena, as well as the endangered wild dog and the secretive leopard.

A magnificent way to start any itinerary in Botswana – activities you can do whilst here include a visit to Baines Baobab's, game drive, nature walks and star gazing.

On your morning of departure after a game activity and breakfast – you will be transferred to the airstrip to continue on your journey to Kwara.

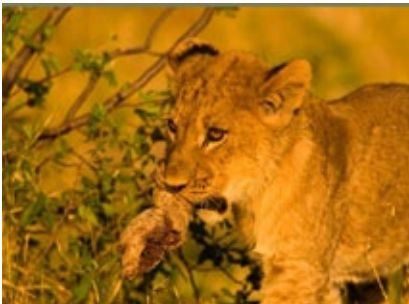
Kwara is deep in the clear permanent waters of the Okavango Delta. Time at Kwara will reveal why the Delta, with all its remarkable plant, bird and animal life, is unique in the world.

### Kwara for 2 nights



The water experience, either fishing, on a mekoro or exploring the channels and rivers by boat, is spectacular. Kwara also offers game drives both off road and at night in our own private traverse area. The exclusive traverse is a feature of the Safari Club experience – while Kwara camp adjoins the Moremi Game Reserve you only have to share your game experience with other Kwara guests.

After a morning activity and a leisurely breakfast on the day of departure from Kwara – you will board another light aircraft for your transfer to Lebala.



### Overnight Lebala for 2 nights

Lebala is hidden in the southern portion of the extensive Kwando wilderness of 232, 000 hectares and the word means wide open spaces, the area is a labyrinth of waterways, reed beds, islands and floodplains, bush, scrub and trees. Excellent general game abounds the broad plains creating spectacular scenery, adorned with herds of plains game and the ever attendant predators.



The Kwando concession is home to more elephant than the entire country of South Africa. On the morning of departure after your morning activity and breakfast you will be transferred by light aircraft to Kasane airport – from here we get a road transfer from Kasane across to Zambia and Stanley's Safari Lodge.



### 2 nights at Stanley's Safari Lodge

Stanley's Safari Lodge is the exclusive oasis for the new explorers of the Victoria Falls. With only 10 private cottages – it is able to give you an unmatched level of entirely personalised service.

Bordering the Mosi-Oa-Tunya National Park, with a view of the spray of Victoria Falls in the distance, the exclusive Stanley's Safari Lodge will take you back to the Africa of the 1920's.....



From every room at Stanley's Safari Lodge, you can see the distant views of the sprays of Victoria Falls. Set on a hill overlooking unspoilt bush, Stanley's is a perfect base from which to explore the delights of the area.

Your two night stay here will include a visit to the famous Victoria Falls, an evening boat cruise on the mighty Zambezi, a guided tour of Mkuni village and a tour of the Livingstone museum. After 2 glorious nights here – sadly your trip comes to an end when you are transferred to Livingstone airport for your onward journey.



N.B –please note that Nxai Pan is in a national park and very ecologically sensitive area and therefore no off road driving or night drives are permitted. NO FISHING is permitted during the months of January and February.



[www.safari-club.co.uk](http://www.safari-club.co.uk)

Call: 0845 0545 889

